



Model: _____

Item #: _____ Quantity: _____

Project: _____



1800 or 2100 Series Available
(see reverse)

- **Sink Bowls:**
20 gauge 304 series stainless steel 10" x 14" x 10" deep. Furnished with 1" IPS rear corner drain and 7 1/2" overflow pipe.
- **Drainboard:**
20 gauge 304 series stainless steel reinforced with welded braces every six inches.
- **Front Apron:**
20 gauge 304 series stainless steel clad over 20 gauge galvaneal.
- **Sides:**
20 gauge 304 series stainless steel.
- **Backsplash:**
20 gauge 304 series stainless steel.
- **Back and Bottom:**
20 gauge galvaneal.
- **Legs:**
1 5/8" tubular 16 gauge stainless steel with grey thermoplastic bullet foot.
- **Faucet (included):**
Royal Series 4" center wall or deck mount faucet with cartridge valves. (1800 Series-wall mount, 2100 Series-deck mount)
- **Plumbing:**
1/2" IPS hot and cold water
1" IPS drain connection

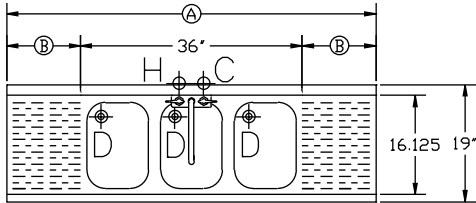
Accessories

- Built-in 20 gauge Sound Deadened Krowne Royal Single Speedrail
- Built-in 20 gauge Sound Deadened Krowne Royal Double Speedrail
- Towel Ring
- Waste Manifold
- Perforated Basket
- Side Splash (specify left or right)
- Corner Return (specify left or right)
- 6" longer Stainless Steel Legs

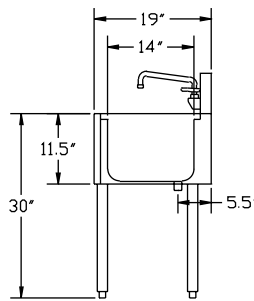
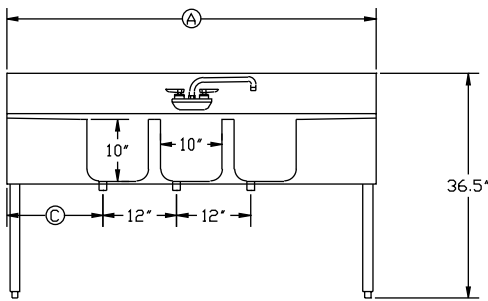
Approved By: _____

Model: _____ Item #: _____ Quantity: _____ Project: _____

1800 Series

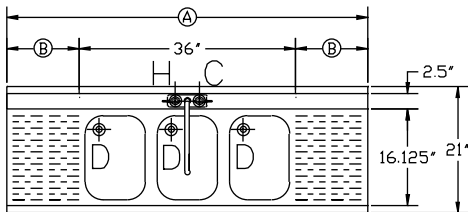


Model Numbers	Length Ⓐ	Drainboard Ⓑ	Left Side to Drain Ⓒ	Bowl(s) Location	Weight lbs
KR18-33C	3'-0"	n/a	4"	Center	85
KR18-43L	4'-0"	12"	4"	Left	105
KR18-43R	4'-0"	12"	15"	Right	105
KR18-53C	5'-0"	12" (2 ea.)	15"	Center	115
KR18-63C	6'-0"	18" (2 ea.)	21"	Center	135
KR18-73C	7'-0"	24" (2 ea.)	27"	Center	150
KR18-83C	8'-0"	30" (2 ea.)	33"	Center	185

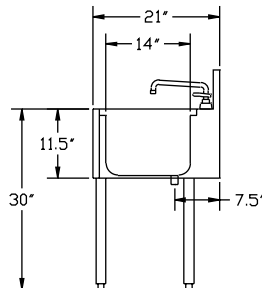
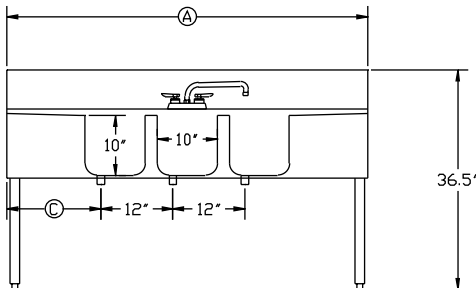


Note: Letter at end of Model # represents Bowl location.

2100 Series



Model Numbers	Length Ⓐ	Drainboard Ⓑ	Left Side to Drain Ⓒ	Bowl(s) Location	Weight lbs
KR21-33C	3'-0"	n/a	4"	Center	85
KR21-43L	4'-0"	12"	4"	Left	105
KR21-43R	4'-0"	12"	15"	Right	105
KR21-53C	5'-0"	12" (2 ea.)	15"	Center	115
KR21-63C	6'-0"	18" (2 ea.)	21"	Center	135
KR21-73C	7'-0"	24" (2 ea.)	27"	Center	150
KR21-83C	8'-0"	30" (2 ea.)	33"	Center	185



Note: Letter at end of Model # represents Bowl location.

Mechanical Requirements:

1/2" IPS Hot and Cold Connection.
1" IPS Drain Connection.

Approved By: _____

Due to our commitment to continued product improvement, specifications are subject to change without notice.