

Champion®

The Dishwashing Machine Specialists

Project _____
Item No. _____
Quantity _____

STANDARD FEATURES

- Automatic tank fill
- Built-in 40°F/22°C rise stainless steel electric booster
- Automatic drain valve
- Electric tank heat (4.7 kW)
- Balanced door lift system
- Low-water tank heat protection
- 1 Hp drip-proof pump motor
- Door safety switches
- Top-mounted, splash-proof control cabinet
- Interchangeable upper and lower spray arms
- Stainless steel pump impeller
- Stainless steel front and side panels
- Detergent/chemical connection provisions
- Water pressure regulating valve (mounted)
- Single point electrical connection (see chart)

D-HB DOOR-TYPE

D-HB

Door-type High Temperature
Dishwashing Machine
with Built-in Booster Heater



OPTIONS & ACCESSORIES

- Electric:** 70°F/39°C rise (built-in)
- Steam coil** tank heat
- Steam injector** tank heat
- Steam:** 40°F/22°C - 70°F/39°C rise (built-in)
- Corner** operation

SPECIFIER STATEMENT

Specified unit will be Champion model D-HB high temperature dishwashing machine with built-in, stainless steel booster heater.

Features top mounted control cabinet, balanced door-lift with door safety switch, 40°F/22°C rise, built-in SST booster, interchangeable stainless steel wash and rinse arms, 55 racks/hr., 1.1 US gals/rack, single point electrical connection. Constructed of Type 304 SST.

1 year parts and labor warranty.

2674 N. Service Road,
Jordan Station, Ontario, Canada L0R 1S0
Tel: 800/263-5798 Fax: 905/562-4618

Champion Industries, Inc.
P. O. Box 4149, Winston-Salem, NC 27115
Tel: 800/532-8591 Fax: 336/661-1979
www.championindustries.com

Champion®

The Dishwashing Machine Specialists

D-HB DOOR-TYPE

Door-type High Temperature
Dishwashing Machine
with Built-in Booster Heater

Details, Dimensions & Connections

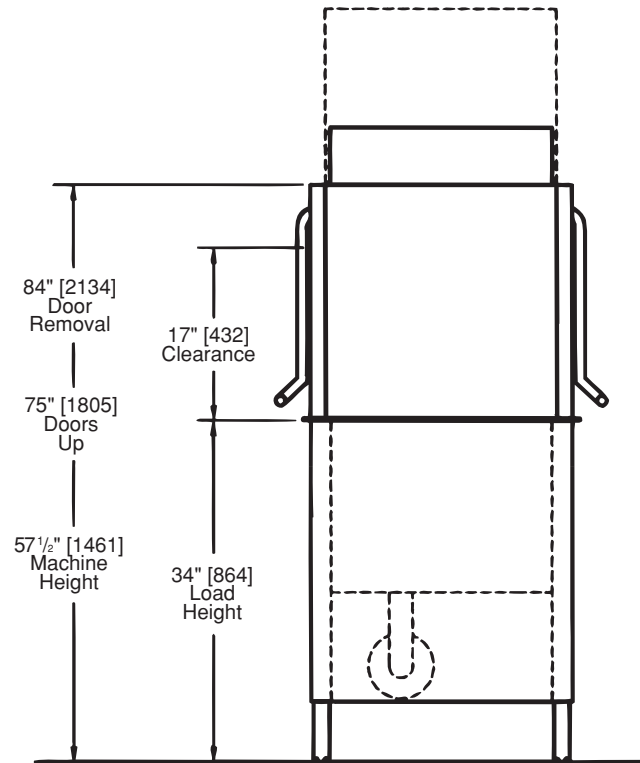
Length between table connections: **26"/660mm**
Volume crated: **46 cu.ft.**
Shipping weight crated: **350 lbs./158kg**
Dimensions shown in inches and [millimeters]

Utilities	
1	Electrical (See Box)
2	Hot Water 3/4" NPT hot water 140°F/60°C min for 40°F/22°C rise booster. 3/4" NPT hot water 110°F/43°C min for 70°F/39°C rise booster. Flow pressure 20-22 psi. (138-151kPa)
3	Drain 2" O.D. connection. Max. flow rate 15 US gpm.

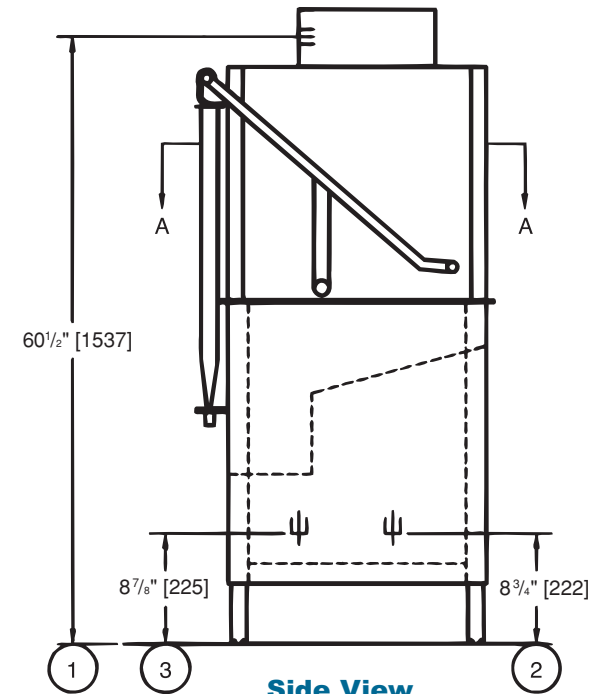
For Steam Heat D-HB w/40°F/33°C or 70°F/39°C Rise Booster			
Elec. Specs.	Rated Amps	Minimum Supply Ckt. Conductor Ampacity	Maximum Overcurrent Protective Device
208/60/1	13	15	15
240/60/1	12	15	15
208/60/3	6	15	15
240/60/3	6	15	15
480/60/3	3	15	15
575/60/3	3	15	15

For Electrical Heat D-HB w/40°F/22°C Rise Booster			
Elec. Specs.	Rated Amps	Minimum Supply Ckt. Conductor Ampacity	Maximum Overcurrent Protective Device
208/60/1	71	80	80
240/60/1	79	90	90
208/60/3	40	50	50
240/60/3	45	50	50
480/60/3	20	25	25
575/60/3	16	20	20

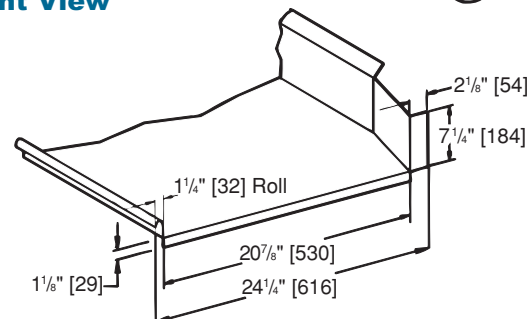
For Electrical Heat D-HB w/70°F/39°C Rise Booster			
Elec. Specs.	Rated Amps	Minimum Supply Ckt. Conductor Ampacity	Maximum Overcurrent Protective Device
208/60/3	57	60	60
240/60/3	64	70	70
480/60/3	29	35	35
575/60/3	25	30	30



Front View

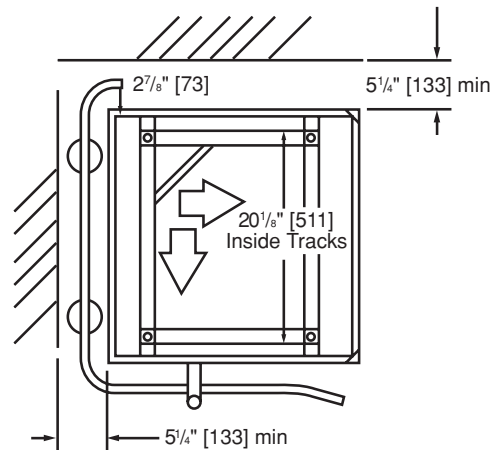


Side View

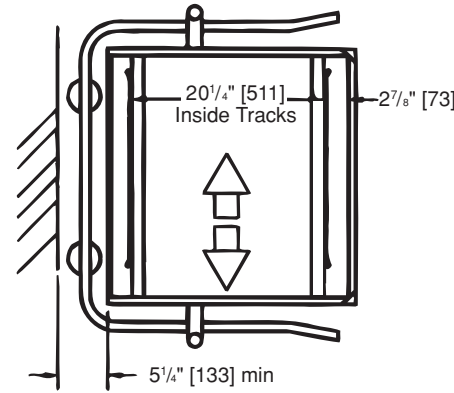


Typical Table Construction

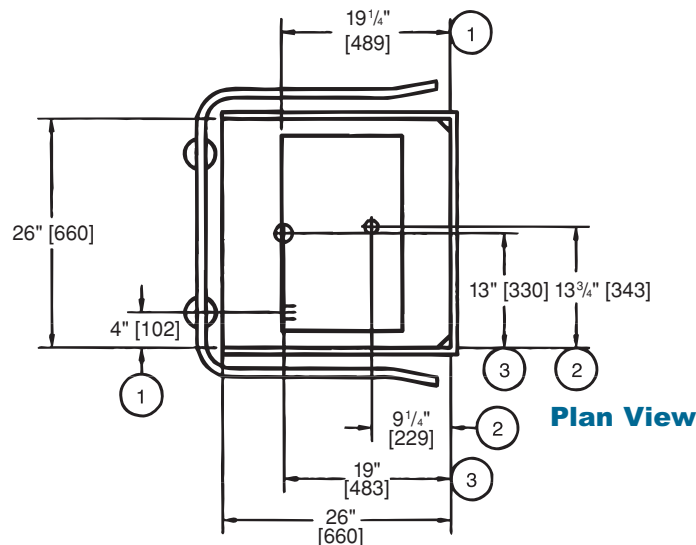
Dimensions shown in inches and [millimeters]



Corner Configuration



Straight-through Configuration



Plan View

SPECIFICATIONS

Capacity

Racks per hr. (NSF rated)	55
Wash tank US gal. (imp. gal./liters)	9 (7.5/3.4)

Motor horsepower

1

Water consumption

Gal. per hr. (max. use)	
US gal. (imp. gal./liters)	61 (51/231)
Gal. per rack	
(US gal. (imp. gal./liters))	1.1 (0.93/4.2)

Temperatures °F/°C

Wash	150/66
Rinse	180/82

Heating

Tank heat, electric, (kW)	4.7
Tank heat, steam (lbs. per hr. required at 15 psi flow pressure)	25
Electric booster (kW required for 40°F/22°C rise)	9
Electric booster (kW required for 70°F/39°C rise)	13
Steam booster (internally mounted) (lbs. per hr. required for 40°F/22°C rise)	50
Steam booster (internally mounted) (lbs. per hr. required for 70°F/39°C rise)	65

Time cycle in seconds

Wash	40
Dwell	10
Rinse	10
Total cycle	60

Warning: Plumbing and electrical connection should be made by qualified personnel who will observe all the applicable plumbing, sanitary and safety codes and the National Electrical Code.

Note: Water Hammer Arrestor (meeting ASSE-1010 standard or equivalent) to be supplied (by others) in common water supply line at service connection.

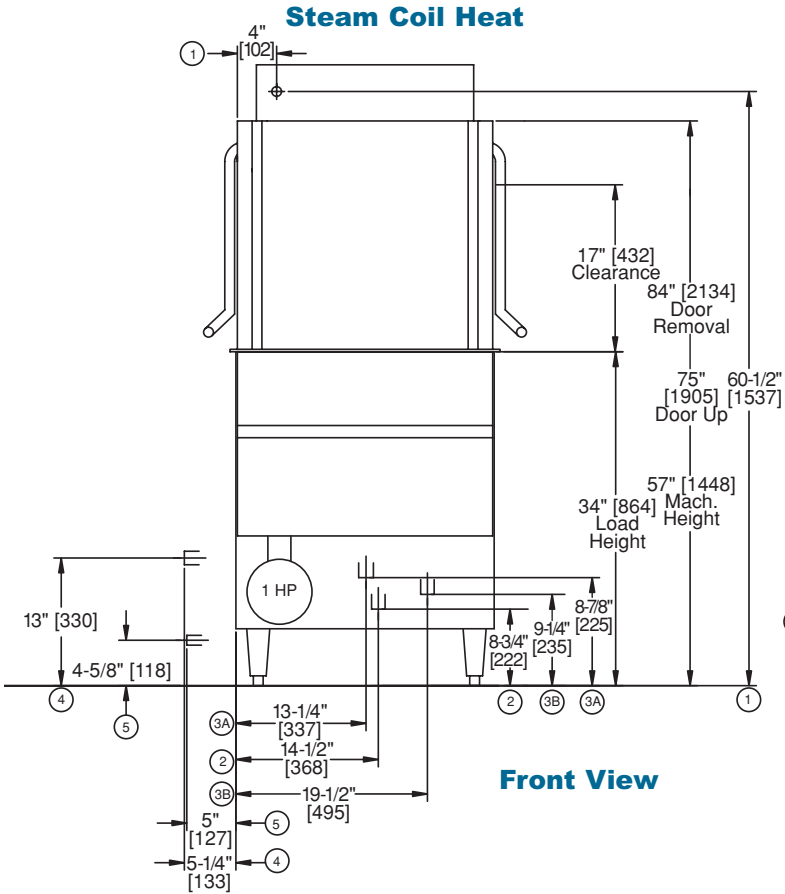
Due to an ongoing value analysis program at Champion, specifications contained in this catalog are subject to change without notice.

D-HB

Door-type High Temperature
Dishwashing Machine
with Built-in Booster Heater

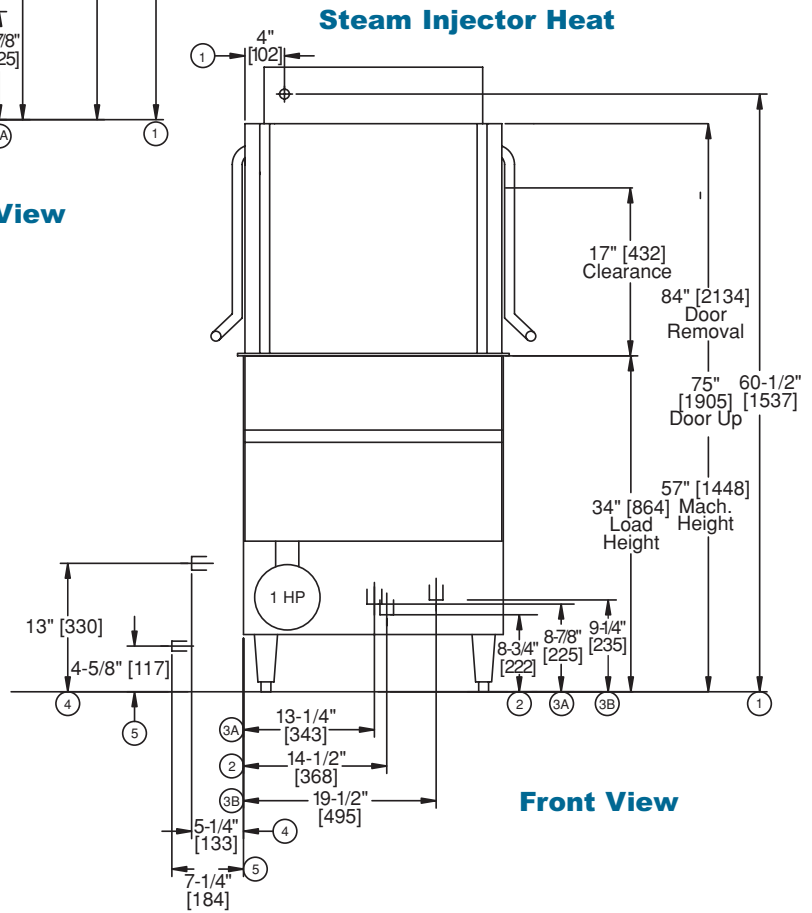
Champion®

The Dishwashing Machine Specialists



Front View

Utilities	
1 Electrical	(See box)
2 Hot Water	3/4" NPT 110°F/43°C - 140°F/60°C hot water connection. Flow pressure 20-22 psi. (138-151 kPa)
3 Drain	A. 1 1/2" O.D. machine connection B. 3/4" NPT booster relief to open drain
4 Steam	3/4" NPT machine connection. Flow pressure 15-30 psi.
5 Condensate	3/4" NPT machine return to boiler



Front View

Due to an ongoing value analysis program at Champion, specifications contained in this catalog are subject to change without notice.

Champion Industries, Inc., P. O. Box 4149, Winston-Salem, NC 27115 • 800/532-8591 • Fax: 336/661-1979 • www.championindustries.com
2674 N. Service Road, Jordan Station, Ontario, Canada L0R 1S0 • 800/263-5798 • Fax: 905/562-4618